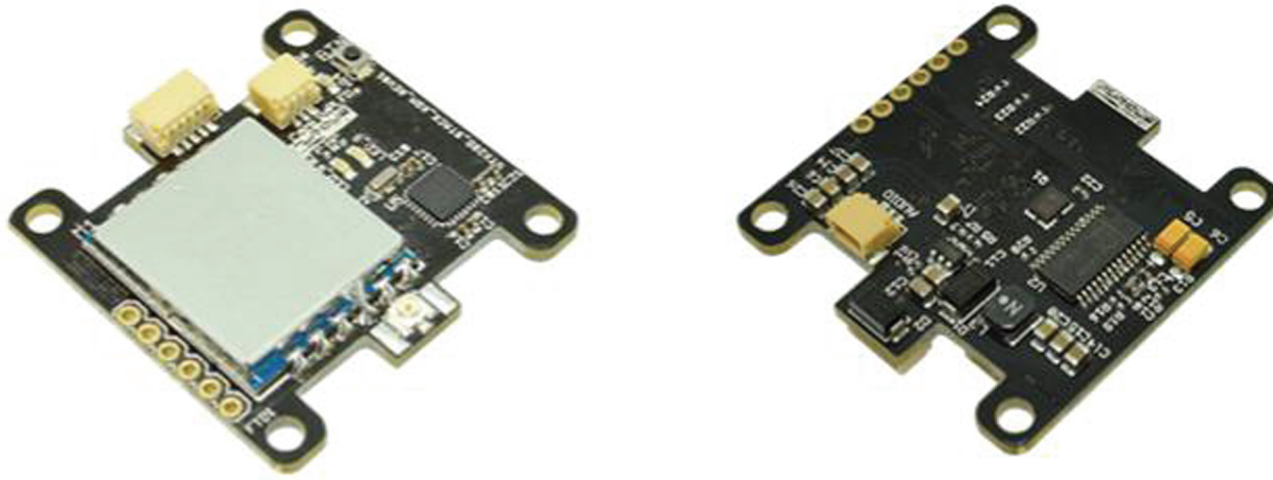
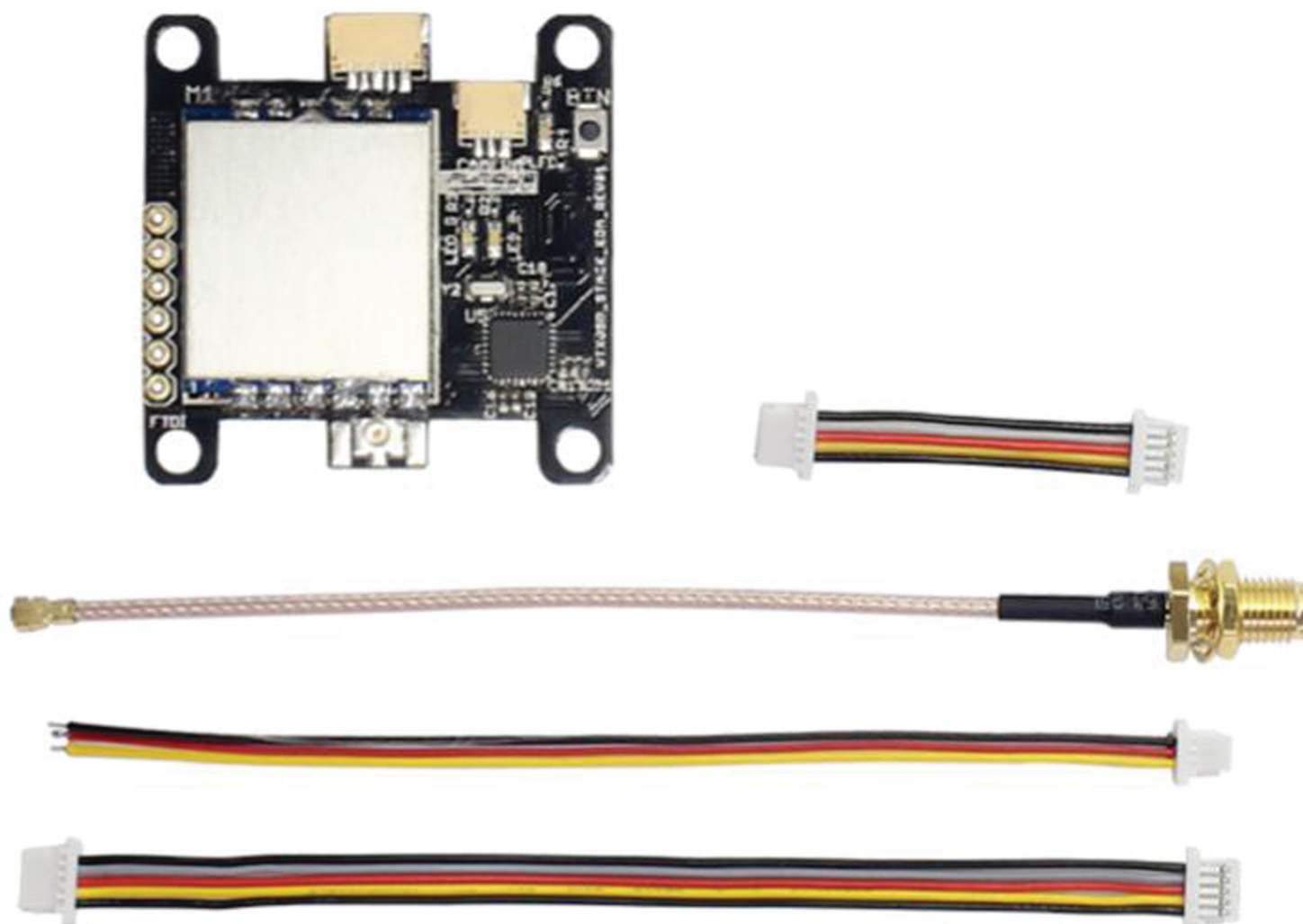


# Furious FPV Passado OSD-VTx



## Key features

- **Stealth Power Up**
- **Shut down and Power VTx via TX**
- **600mW VTx Output**
- **VTx Channel Configurable via the OSD and button**
- **External Audio support**
- **World's lightest 40ch video transmitter line**
- **Raceband Ready Frequency Layout**
- **PID Tuning Capable**
- **Intergrated Flight Timer System**
- **Programmable OSD via Serial Connection**
- **Support 2S-6S lipo battery**





# Button menu control

There are categories in the menu, and settings. Pressing the button for 3 second will toggle between categories, pressing it for a short (<1s second) time toggles between settings. To enter the menu, hold the button for 3 second. LED colors will signal the state of the menu, for an overview see the following table.

## Channel select mode

Enter menu by pressing the button for 3s until Led Green turn off. Led blue flash. Select channel by simple short press.

Save & Exit by pressing the button for 5s until two led flash.

## Band select mode

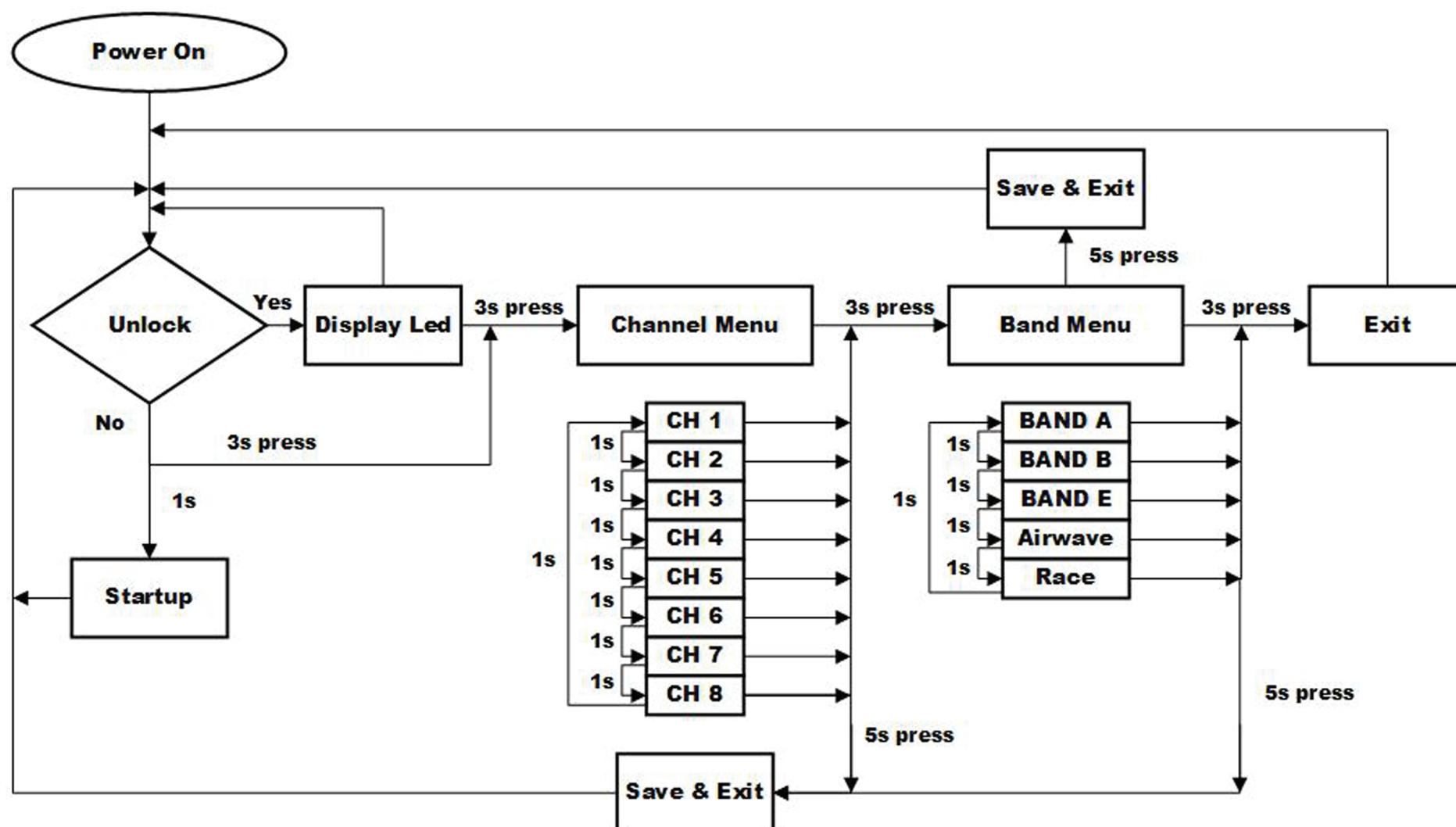
In menu Channel select mode, Pressing button for an additional 3s until Led Blue turn off, Led Green turn on. Led Green flash. Select band by simple short press. Save & Exit by pressing the button for 5s until two led flash.

## Save & Exit

Save & Exit by pressing the button for 5s until two led flash.

## Unlock

Before Power on, You have unlock transmitter by simple short press or Save & Exit.



# Led flash codes for channel and band

The PASSADO signals select channel, band and Unlock-lock of LED codes. The same sequence is also repeated in the menu to make it unified. First the BLUELED flashes to indicate the channel value. Then the GREENLED flashes to indicate the channel value.

For example, Channel 1, Band 5, will have the following startup LED code:

- 1xBlue and 5xGreen

Once the Video transmitter has successfully booted up, Two Led flash to show channel and band. And a constant BLUE + GREEN for lock state.



## MENU TABLE

LED RED					
	1x	2x	3x	4x	5x
<b>Band</b>	<b>A</b>	<b>B</b>	<b>E</b>	<b>Airware</b>	<b>Race</b>

LED BLUE								
	1x	2x	3x	4x	5x	6x	7x	8x
<b>CHANNEL</b>	<b>1</b>	<b>2</b>	<b>3</b>	<b>4</b>	<b>5</b>	<b>6</b>	<b>7</b>	<b>8</b>

## FREQUENCY TABLE

CHANNEL	1	2	3	4	5	6	7	8
<b>Band A</b>	5865	5845	5825	5805	5785	5765	5745	5725
<b>Band B</b>	5733	5752	5771	5790	5809	5828	5847	5866
<b>Band E</b>	5705	5685	5665	5645	5885	5905	5925	5945
<b>Airware</b>	5740	5760	5780	5800	5820	5840	5860	5880
<b>Race Band</b>	5658	5695	5732	5769	5806	5843	5880	5917

## OSD control

The menu itself is very straightforward. allowing you choose channel, band and shutdown vtx by TX. To enter menu, you must: THRT middle, YAW right and PITCH full.

VTX SHUTDOWN with parameter is NONE: Disable feature turn on/off by TX

VTX SHUTDOWN with parameter is AUX1-AUX4: Use AUXx of TX for turn on (>1500), turn off (<1500).

```

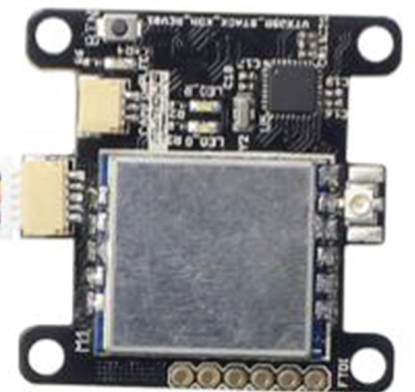
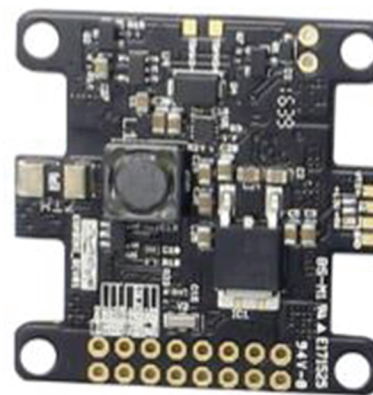
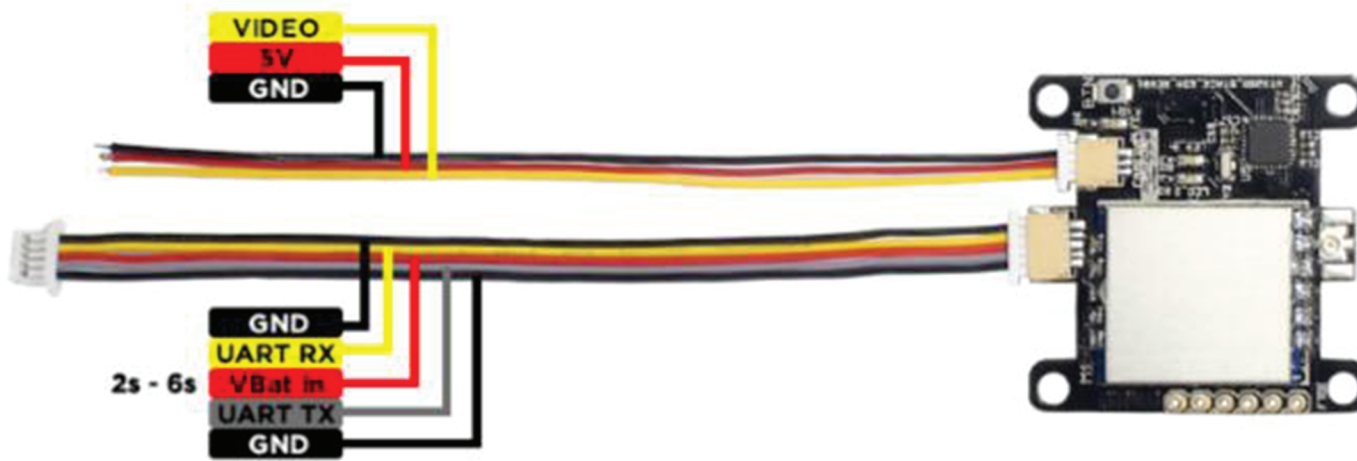
PID CONFIG
      P      I      D
ROLL   45    45    20
PITCH  60    45    22
YAW    70    45    20
ALT    50     0     0
GPS    15     0     0
LEVEL  34    14    53
VTX SHUTDOWN      > NONE
VTX BAND          A
VTX CHANNEL       1
EXIT  SAVE+EXIT <PAGE>
    
```

```

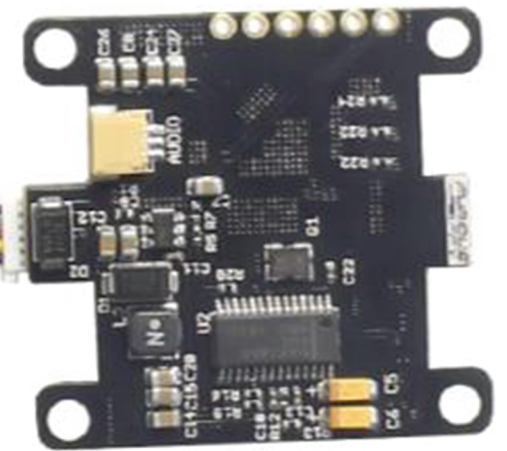
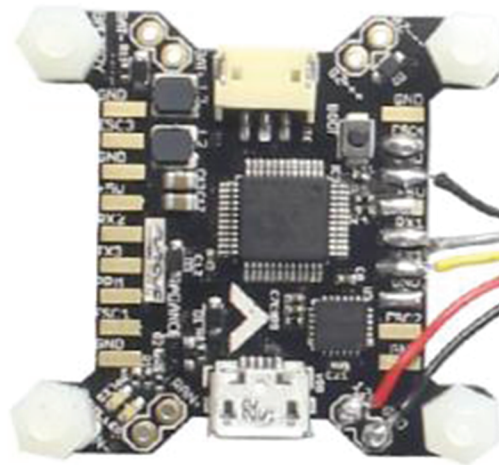
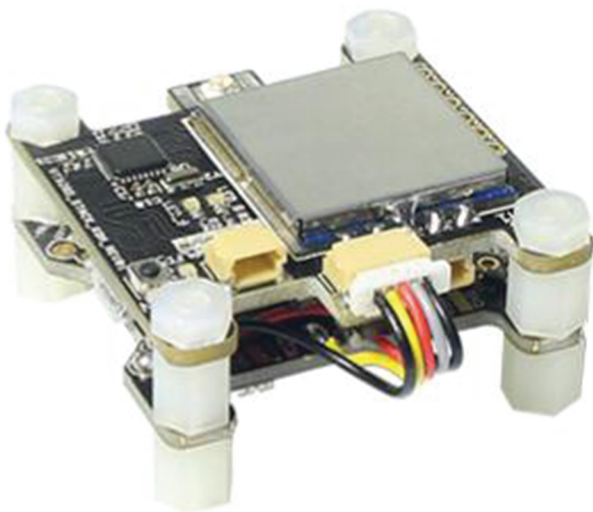
PID CONFIG
      P      I      D
ROLL   45    45    20
PITCH  60    45    22
YAW    70    45    20
ALT    50     0     0
GPS    15     0     0
LEVEL  34    14    53
VTX SHUTDOWN      > AUX1
VTX BAND          A
VTX CHANNEL       1
EXIT  SAVE+EXIT <PAGE>
    
```



# PASSADO OSD-VTx PINOUT



**KOMBINI Flight Controller connect with PASSADO OSD-VTx**



**RADIANCE Flight Controller connect with PASSADO OSD-VTx**

## Ports

WIKI

**Note:** not all combinations are valid. When the flight controller firmware detects this the serial port configuration will be reset.  
**Note:** Do **NOT** disable MSP on the first serial port unless you know what you are doing. You may have to reflash and erase your configuration if you do.

Identifier	Data	Logging	Telemetry	RX	GPS
USB VCP	<input checked="" type="checkbox"/> MSP 115200 ▼	<input type="checkbox"/> Blackbox 115200 ▼	Disabled ▼ AUTO ▼	<input type="checkbox"/> Serial RX	<input type="checkbox"/> 57600 ▼
UART1	<input checked="" type="checkbox"/> MSP 115200 ▼	<input type="checkbox"/> Blackbox 115200 ▼	Disabled ▼ AUTO ▼	<input type="checkbox"/> Serial RX	<input type="checkbox"/> 57600 ▼
UART2	<input type="checkbox"/> MSP 115200 ▼	<input type="checkbox"/> Blackbox 115200 ▼	FrSky ▼ AUTO ▼	<input type="checkbox"/> Serial RX	<input type="checkbox"/> 57600 ▼
UART3	<input type="checkbox"/> MSP 115200 ▼	<input type="checkbox"/> Blackbox 115200 ▼	Disabled ▼ AUTO ▼	<input checked="" type="checkbox"/> Serial RX	<input type="checkbox"/> 57600 ▼

**Setup UART 1 for KOMBINI and RADIANCE by Betaflight**